

PRESS RELEASE

New construction panel for the floor:

Leverkusen, 10.01.2023

Page [1 / 4]

Lux Elements - Floor-WH as substrate for underfloor heating

The new Floor-WH floor construction panel with milled recesses on the upper side has been available from Lux Elements since the beginning of 2023. The product was specially developed for the installation of underfloor heating pipes under ceramic coverings.

Like all construction panels from Lux Elements, Floor-WH is a support element made of polystyrene hard foam with fibre-glass reinforcement and mortar coating on both sides.

It is offered in the thicknesses 30 and 50 mm with manageable dimensions of 1250 x 600 mm.

Due to the good insulating properties of the hard foam, the milled construction panel is both mounting and insulating element in one. Since no additional screed structure is necessary, the product is ideally suited for renovations in old buildings where only a low floor structure is possible. In addition, there are no long drying times and the room can quickly be used again.

For the installation, the construction panels are first glued to the floor with a suitable fixing adhesive. The dot technique can also be used depending on the panel thickness. It is thus possible to level out irregularities in the substrate.

PRESS RELEASE

Subsequently, the prefabricated milled recesses enable the fast and homogeneous installation of the heating pipes for water heating systems with a diameter of 16 mm.

The milled recesses are designed so that different installation variants are possible. In the execution of the pipe it is also possible to modify the construction panel with a cutter if necessitated by the room situation.

When the heating is put into operation after the final tiling, the room is heated quickly by the direct dissipation of heat into the ceramic top covering.

More information as well as the entire "Systems for bathroom and shower" range can be found at www.luxelements.com.

Information:

Lux Elements GmbH & Co. KG

Barbara Steinhöfer

E-mail: b.steinhoefer@luxelements.de

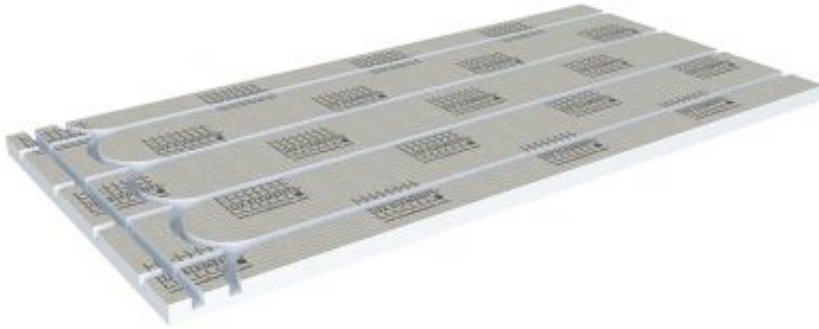
Phone +49 (0) 21 71/72 12 15

Leverkusen, 10.01.2023

Page [2 / 4]

PRESS RELEASE

Leverkusen, 10.01.2023
Page [3 / 4]



The new milled Floor-WH construction panel is available in the thicknesses 30 und 50 mm.

TELECHARGEMENT:

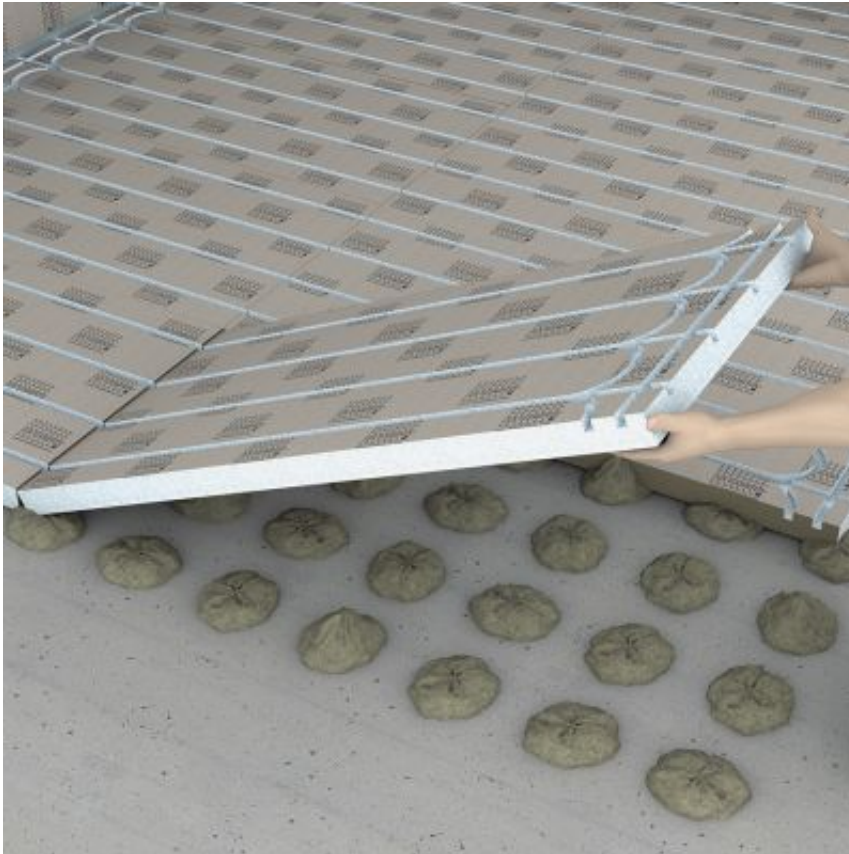
-> [FLOOR-WH_F_30_3C](#) [174 KB]

-> [FLOOR-WH_F_30_4C](#) [3,2 MB]

PRESS RELEASE

Leverkusen, 10.01.2023

Page [4 / 4]



Irregularities in the substrate can be levelled out using the dot technique (possible only for the thickness 50 mm):

TELECHARGEMENT:

-> [FLOOR-WH_F_Anwendung_3C \[824 KB\]](#)

-> [FLOOR-WH_F_Anwendung_4C \[9,9 MB\]](#)