

www.luxelements.com

PROJECT

WHEN BATHROOM DREAMS COME TRUE

Bright design for a more comfortable atmosphere



A beauty treatment for your own bathroom – just the right thing for those who no longer want to see the now faded gloss of past (furnishing) times and would prefer to let the here and now shine through. Standards change over the years. So you might want that little bit extra when modernising. An upgrade to a higher class. In a modern guise, the old room transforms itself into an entirely personal day spa – a private oasis of well-being. Innovative building products and individual made-to-measure items turn any room into the bathroom of your dreams. The example of the Mayer family from Sauerland shows how easily dreams can come true.

Christiane Mayer is thrilled every morning when she walks into her bright, light bathroom: “A room where you really feel comfortable.” That felt completely different before the renovation in 2013. Roof slopes, dark floor tiles and black bathroom ceramics made the 17 sq. metre room on the upper floor of the house look dark and heavy. The disadvantageous design of the room led to areas being unused or unfavourably used.

LIGHT, DIMENSIONALLY-STABLE AND MOISTURE-RESISTANT

The house owner had definite ideas of how her new bathroom should look down to the smallest detail. Bright colours and as few tiles as necessary – that was her brief. The room was to look light in a bright ambience with generously sized shelf space in niches and cabinets.

Since the room is situated on the upper floor of a house that is nearly 60 years old, a lightweight building material was demanded for reasons of statics. One that could also be processed quickly. The residents naturally wanted to do without their bathroom for the shortest possible time.

These are all requirements that the hard foam support elements from LUX ELEMENTS fulfil without restrictions. The components are easy to work with, have a moisture-resistant polystyrene core, are permanently dimensionally stable and are individually cut to size.

LUX ELEMENTS produces polystyrene hard foam in its own manufacturing facilities and can continuously ensure the high quality and goodness of the building material.



■ **OLD** – roof slopes, dark floor tiles and black bathroom ceramics made the room look dark and heavy.



■ **NEW** – a room to feel really comfortable in: the bright, light bathroom following the renovation.

FLOATING DOUBLE WASHSTAND

In the Mayer family's case the room layout was completely reconceived. A 'floating' double washstand with two top-mounted wash basins and large shelving areas replaced two individual black wash basins.

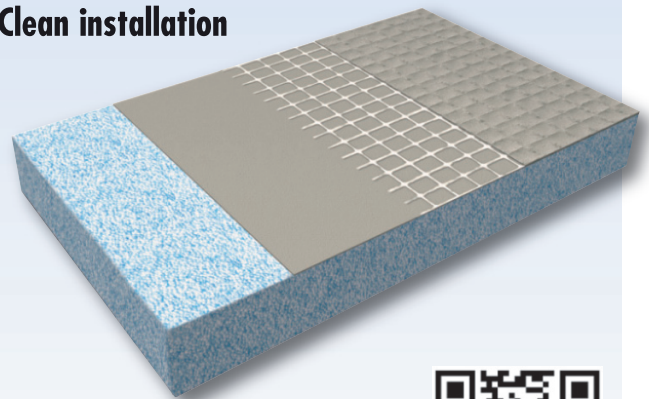
The model comes from the LAVADO FLOAT product range from LUX ELEMENTS, which offers the user a great deal of creative freedom. The LAVADO-FLOAT system encompasses tileable washstands in different variations, which can be decorated as desired by the combination of large tiles, natural stone, mosaic or plaster. The invisible support in the wall gives the construction a floating look. The Mayers used the free space underneath the washstand for the installation of a generously-dimensioned floor cupboard.



■ The 'floating' double washstand with two top-mounted washbasins and large shelving areas comes from the LAVADO-FLOAT product range.

The advantages of LUX ELEMENTS hard foam support elements at a glance:

- Easy to work with
- Fast mounting
- Low cost
- Clean installation



Would you like to learn more?
Please see:
www.the-original-can-do.com



PRIVATE BATHING ISLAND

The maintenance-intensive and therefore barely used old whirlpool under the roof slope was replaced by an oval bath tub integrated in a corner of the room. In order to make optimum use of the available space, it was 'pulled' into the room and thus also away from the roof slope. The contractors built a platform with a generously sized shelving area in the newly created corner behind the bath tub.

The tub cladding made of hard foam support material was prefabricated by LUX ELEMENTS. The manufacturer has special production methods that

enable the cutting to size of round shapes. The platform behind the tub is also a made-to-measure custom production.

The prefabrication not only ensures a precise fit – it also saves a great deal of time on the building site. Building progress is significantly accelerated and the bathroom can be used again very quickly.

Alternatively, platforms can of course be constructed on site from ELEMENT construction panels.

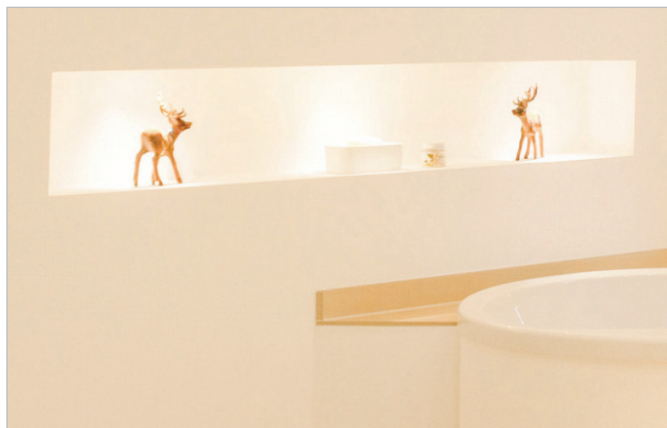


■ A platform with a generously sized shelving area is located behind the diagonally arranged bath tub. The platform and tub cladding are made of hard foam support panels.

BRIGHT SPOT

A particular eye-catcher is the illuminated wall niche. The walls surrounding the tub were rebuilt. Hard foam support elements were used here as well. The stud frame was clad with ELEMENT construction panels and the niche was formed.

The precisely fitting box was also supplied prefabricated. The fact that the material is so easy to work with facilitates the installation of the most diverse lighting systems.



■ The installation of different lighting systems is easily doable, if the duration of temperature is not above 75 ° C.

MOULD-RESISTANT AND THERMALLY INSULATING

In the Mayer's new room concept the shower was moved to the window. The good ventilation there prevents the growth of mould. The fact that the hard foam support elements are mould-resistant was a very important material advantage for Christiane Mayer. She also enthuses about the thermally insulating property of the waterproof material:

"The hard foam shower base is particularly comfortable for me. The floor is warm as soon as the warm water hits it. That is a wonderfully pleasant feeling."



FAST DESIGN CHANNEL

The flat shower with a channel drain from the TUB-LINE range was similarly made of hard foam. The design channel has a rotatable cover rail with double optics: one side is tiled, the other is made of stainless steel.

Christiane Mayer chose a shower head with a high flow rate. The drainage capacity must be accordingly dimensioned to cope with the flow rates. That is ensured with products from LUX ELEMENTS. The drainage capacity of the channel's drain pot is around 0.8 l/s.



STEP-UP FLAT SHOWER

The hard foam shower base element measuring 1900 x 1350 mm has an integrated slope of 150 to 135 mm. Since insufficient installation height was available in the floor for the drain pipework, the step-up solution developed for older buildings was selected and a 105 mm high substrate element was installed together with a 45 mm thick shower base. In the Mayer family's case it was specially manufactured. There is a large selection of standard formats in the LUX ELEMENTS range.

Last but not least, the partition wall between the shower and the rest of the room was also constructed with hard foam support elements. A classy looking niche for the storage of shower utensils was individually formed here as well.

Christiane Mayer is absolutely delighted with her new bathroom: "My dream has come true. It is in every respect a room to feel comfortable in. I can really relax here."



■ Since there was insufficient installation height in the floor for the drain pipework, a step-up solution was chosen.



■ **Shower during the construction:** The substrate element is adhered to the floor with COL-AK fixing adhesive and the recess for the pipework is cut out. The alignment is checked with the spirit level...



... then the shower base with slope and sealed-in channel is adhered to the substrate element and the drain pot is connected. Joints and transitions are sealed afterwards using sealing tapes from the DRY series.

Products used:

For more information on these and other products of LUX ELEMENTS, please refer to the internet at www.luxelements.com



LUX ELEMENTS®-ELEMENT-EL
The construction panel for walls and floors

... support element made of polystyrene hard foam with mortar coating and glass fibre fabric on both sides.



LUX ELEMENTS®-TOP
The bath surrounds

... cladding for standard steel and plastic bath tubs. Ready for tiling, suitable for all installation situations. If a maintenance opening is required there are two solutions to choose from.



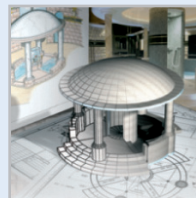
LUX ELEMENTS®-LAVADO
The washstands

... tileable washstands in four variants with hidden mounting in the wall for "floating" design.



LUX ELEMENTS®-TUB
The shower bases

... tileable shower bases for point drainage and linear drainage in various design options with substrate elements, drainage technology and diverse accessories.



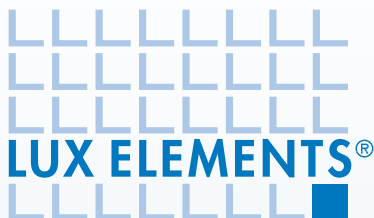
LUX ELEMENTS®-CONCEPT
The individual concepts

... CONCEPT is the product group for individual concepts and components for spa and leisure facilities. We produce according to the customer's specifications or develop with you customer- or object-based solutions.



LUX ELEMENTS®-SYSTEM COMPONENTS
The system components

... everything for the quick and reliable processing of the LUX ELEMENTS® hard foam support elements.



Object Details:

Object:

Renovation of a 17 sq. metre bathroom with roof slopes

Customer:

Private customers

Products used:

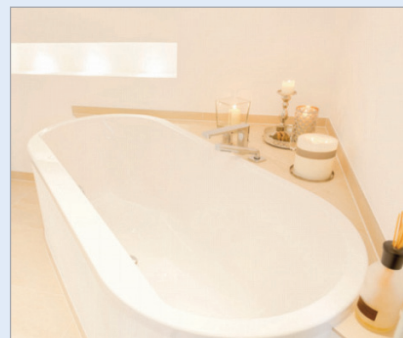
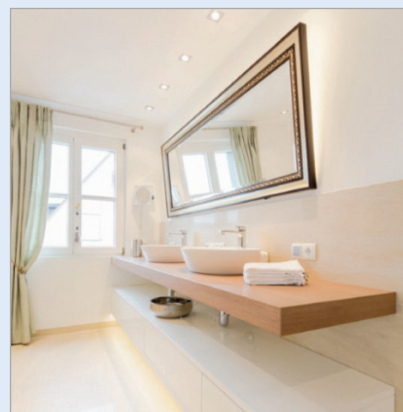
- LUX ELEMENTS®-ELEMENT
- LUX ELEMENTS®-TOP (Bath surrounds)
- LUX ELEMENTS®-TUB-LINE
- LUX ELEMENTS®-TUB PLUS (Individual products)
- LUX ELEMENTS®-CONCEPT
- LUX ELEMENTS®-DRY (Sealing tapes)
- LUX ELEMENTS®-COL (Adhesives)

Photo credits:

LUX ELEMENTS

Manufacturer:

LUX ELEMENTS GmbH & Co. KG
 An der Schusterinsel 7 • D - 51379 Leverkusen
 Tel.: +49 (0) 21 71/72 12-0
 Fax: +49 (0) 21 71/72 12-40
 info@luxelements.de • www.luxelements.com



(D)

LUX ELEMENTS GmbH & Co. KG

An der Schusterinsel 7
 D - 51379 Leverkusen-Opladen
 Tel. +49 (0) 21 71/72 12-0
 Fax +49 (0) 21 71/72 12-10

info@luxelements.de
 www.luxelements.com

(F)

LUX ELEMENTS S.A.S

ZI-31, rue d'Ensisheim
 F - 68190 Ungersheim

Tél. +33 (0) 3 89 83 69 79
 Fax +33 (0) 3 89 48 83 27

info@luxelements.fr
 www.luxelements.fr



EUF The EUF (European Union of National Tile Associations) has developed the concept 'Healthier Living with Ceramics' together with its European member associations and sponsor members. This concept is intended as information 'pro tile' for trade, dealers and manufacturers.

LUX ELEMENTS is the force behind the project and is actively involved in its implementation.

Interested in our products?
 Get more information!

**COMPLETE AND RETURN BY FAX TO
 +49 (0) 21 71 / 72 12 10**

Fax order form – Order more information:

(Please enter the quantity and desired language!)

- | | | |
|---------------------------------------------------------|----------------------------------------------------------------------------------|-------------------|
| ■ PRICE LIST (D/GB/F/NL) | <input type="checkbox"/> ___ pcs. / <input type="checkbox"/> PDF | |
| ■ PROGRAM | <input type="checkbox"/> ___ pcs. / <input type="checkbox"/> PDF | (D) (F) (NL) (GB) |
| ■ THE BASIS – Working with hard foam support elements | <input type="checkbox"/> ___ pcs. / <input type="checkbox"/> PDF | (D) (F) (NL) (GB) |
| ■ THE EXPERIENCE – Flush with the floor shower bases | <input type="checkbox"/> ___ pcs. / <input type="checkbox"/> PDF | (D) (F) (NL) (GB) |
| ■ INDIVIDUAL CONCEPTS – Customised and special products | <input type="checkbox"/> ___ pcs. / <input type="checkbox"/> PDF | (D) (F) (NL) (GB) |
| ■ DETAILED DESCRIPTIVE LITERATURE | ___ pcs. | (D) (F) (NL) (GB) |
| ■ ADVICE | <input type="checkbox"/> Yes, I am interested in an appointment, please call me. | |

SECTOR: Architect Tile retailer Tile installer Building materials retailer
 Plumber Bathroom designer Installer Others

COMPANY: _____

CONTACT: _____

ADDRESS: _____

POST CODE/TOWN: _____

TEL: _____

FAX: _____

E-MAIL: _____

For more information on these and other products of LUX ELEMENTS, please refer to the internet at www.luxelements.com